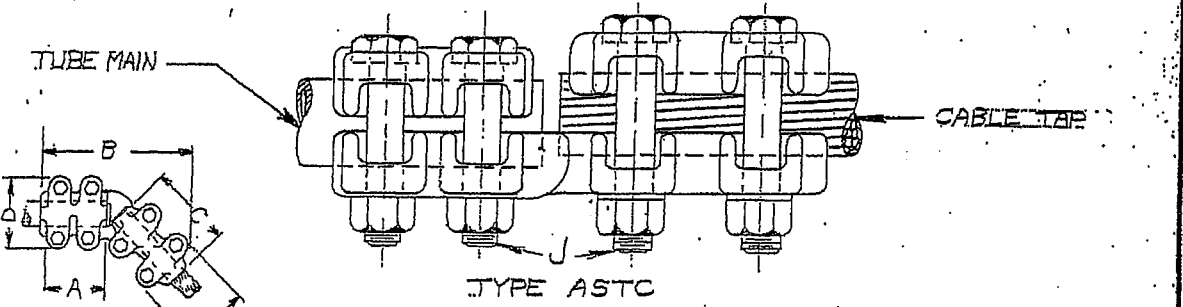
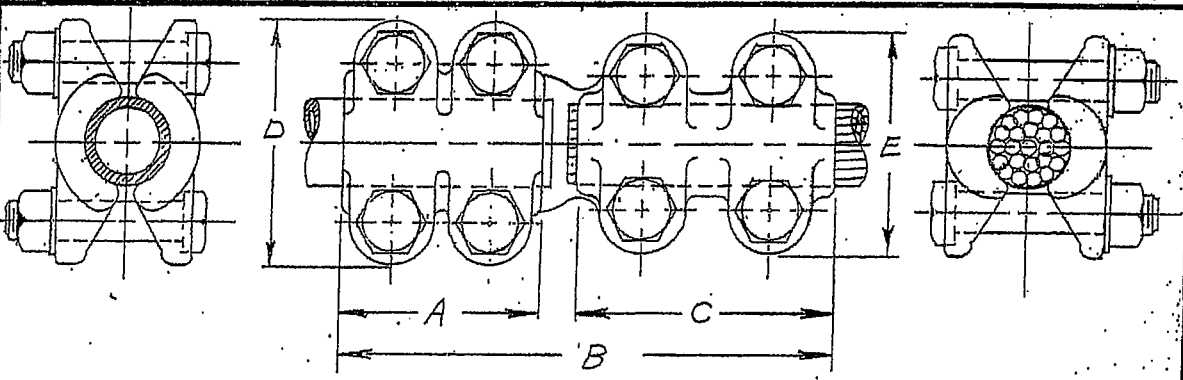
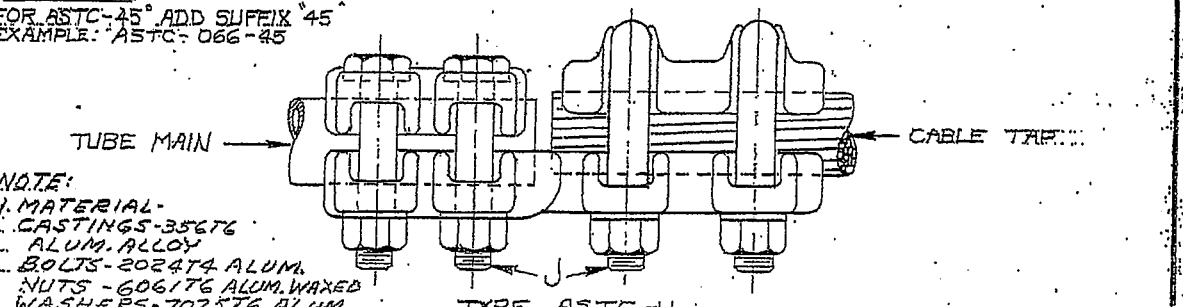


REVISIONS		NO.	DESCRIPTION	BY
DATE	NO.	DESCRIPTION	BY	
4-23-72	5	NOTE 2 - P. 576 428 5 2532	J.S.	
10-04-02	9	ADDED ITEM ASTC-70MM13	WSR	
10-04-02	9	EC 5706	WSR	

REVISIONS		NO.	DESCRIPTION	BY
DATE	NO. <td>DESCRIPTION <td>BY</td> <td></td> </td>	DESCRIPTION <td>BY</td> <td></td>	BY	
8-6-70	2	REDRAWN	J.S.	
11-7-73	3	ADDED 90° DIMS. 212	R.H.	
3-24-75	4	ADDED NOTE #2 ON TAP	J.S.	



ASTC-45°  
 FOR ASTC-45° ADD SUFFIX "45"  
 EXAMPLE: ASTC-066-45



NOTE:  
 1. MATERIAL -  
 CASTINGS-35676  
 ALUM. ALLOY  
 BOLTS-2024T4 ALUM.  
 NUTS-6061T6 ALUM. WAXED  
 WASHERS-707576 ALUM.  
 2. CATALOG ITEMS WITH "AEP" SUFFIX ARE NOT ADDED TO THIS REF. DRAWING. "AEP" SUFFIX PROVIDES A SPECIAL #6 MULTI-CAP FOR #6 TO 250 MCM ALUM. CABLE. EXAMPLE "ASTC-66-AEP" WILL HAVE SAME PHYSICAL DIMENSIONS AS STD "ASTC-66" SUFFIX ALSO INCLUDES INHIBITOR AND BRASSING.

MAIN 1PS	CABLE TAP		CATALOG NUMBER		DIMENSIONS IN INCHES					
	MCM	ACSR	HEX. BOLTS	U-BOLTS	A	B	C	D	E	J
	MIN.-MAX.	MIN.-MAX.								
3/4	#4-250	#4-4/0	ASTC-066	ASTC-066-U	2 1/2	5 3/4	3	3	2 7/16	1/2
3/4	250-400	4/0-336	ASTC-067	ASTC-067-U	2 1/2	6	3	3	2 7/16	1/2
3/4	350-600	336-477	ASTC-069	ASTC-069-U	2 1/2	6 1/4	3 1/4	3	2 1/16	1/2
3/4	600-900	556.5-795	ASTC-0811	ASTC-0811-U	2 1/2	6 1/8	3 1/2	3	2 15/16	1/2
1	#4-250	#4-4/0	ASTC-106	ASTC-106-U	2 3/4	6 1/4	3	3 1/4	2 7/16	1/2
1	250-400	4/0-336	ASTC-107	ASTC-107-U	2 3/4	6 1/4	3	3 1/4	2 7/16	1/2
1	350-600	336-477	ASTC-109	ASTC-109-U	2 3/4	6 1/2	3 1/4	3 1/4	2 11/16	1/2
1	600-900	556.5-795	ASTC-1011	ASTC-1011-U	2 3/4	6 3/8	3 1/2	3 1/4	2 15/16	1/2

NOTE: FOR 90° CONN. SEE DWG. C-10456

R/2 X 2 3/4 X STD-11

DATE 7-6-57  
 DWN BY WDS CKD BY  
 APPROVED  
 SCALE

ALUMINUM STRAIGHT CONNECTOR  
 TUBE MAIN TO CABLE TAP  
 REDUCER

ANDERSON ELECTRIC CORP.  
 LEEDS ALABAMA  
 CAT. NO. ASTC (TAB) DWG. NO. C-1488

MAIN IPS SIZE	CABLE TAP		CATALOG NUMBER DIMENSIONS IN INCHES							
	MCM	ACSR	HEX BOLTS	U-BOLTS	A	B	C	D	E	U
	MIN.-MAX.	MIN.-MAX.								
1/4	#4-250	#4-4/0	ASTC-126	ASTC-126-U	3	6 5/8	3	3 5/8	2 7/16	1/2
1/4	250-400	4/0-336	ASTC-127	ASTC-127-U	3	6 1/2	3	3 5/8	2 7/16	1/2
1/4	350-600	336-477	ASTC-129	ASTC-129-U	3	6 3/4	3 1/4	3 5/8	2 11/16	1/2
1/4	600-900	556.5-795	ASTC-1211	ASTC-1211-U	3	7	3 1/2	3 5/8	2 15/16	1/2
1/2	#4-250	#4-4/0	ASTC-146	ASTC-146-U	3 1/4	6 3/4	3	3 10/16	2 7/16	1/2
1/2	250-400	4/0-336	ASTC-147	ASTC-147-U	3 1/4	6 3/4	3	3 13/16	2 7/16	1/2
1/2	350-600	336-477	ASTC-149	ASTC-149-U	3 1/4	7	3 1/4	3 13/16	2 11/16	1/2
1/2	600-900	556.5-795	ASTC-1411	ASTC-1411-U	3 1/4	7 1/4	3 1/2	3 13/16	2 15/16	1/2
1/2	900-1250	715-1113	ASTC-1413	ASTC-1413-U	3 1/4	7 1/2	3 3/4	3 15/16	3 3/16	1/2
2	250-400	4/0-336	ASTC-207	ASTC-207-U	3 1/2	6 7/8	3	4 5/16	2 7/16	1/2
2	350-600	336-477	ASTC-209	ASTC-209-U	3 1/2	7 1/4	3 1/4	4 5/16	2 11/16	1/2
2	600-900	556.5-795	ASTC-2011	ASTC-2011-U	3 1/2	7 1/2	3 1/2	4 5/16	2 15/16	1/2
2	900-1250	715-1113	ASTC-2013	ASTC-2013-U	3 1/2	7 3/4	3 3/4	4 5/16	3 3/16	1/2
2 1/2	250-400	4/0-336	ASTC-247	ASTC-247-U	3 3/4	7 1/4	3	4 13/16	2 7/16	1/2
2 1/2	350-600	336-477	ASTC-249	ASTC-249-U	3 3/4	7 1/2	3 1/4	4 13/16	2 11/16	1/2
2 1/2	600-900	556.5-795	ASTC-2411	ASTC-2411-U	3 3/4	7 3/4	3 1/2	4 13/16	2 15/16	1/2
2 1/2	900-1250	715-1113	ASTC-2413	ASTC-2413-U	3 3/4	8 1/16	3 3/4	4 13/16	3 3/16	1/2
2 1/2	1250-1600	1113-1272	ASTC-2415	ASTC-2415-U	3 3/4	8 1/2	4 1/4	5 1/16	3 11/16	5/8
3	250-400	4/0-336	ASTC-307	ASTC-307-U	4	7 1/2	3	5 11/16	2 7/16	1/2
3	350-600	336-477	ASTC-309	ASTC-309-U	4	7 3/4	3 1/4	5 11/16	2 11/16	1/2
3	600-900	556.5-795	ASTC-3011	ASTC-3011-U	4	8	3 1/2	5 11/16	2 15/16	1/2
3	900-1250	715-1113	ASTC-3013	ASTC-3013-U	4	8 1/4	3 3/4	5 11/16	3 7/16	1/2
3	1250-1600	1113-1272	ASTC-3015	ASTC-3015-U	4	8 13/16	4 1/4	5 11/16	3 11/16	5/8
3 1/2	250-400	4/0-336	ASTC-347	ASTC-347-U	4 1/4	7 13/16	3	5 15/16	2 7/16	1/2
3 1/2	350-600	336-477	ASTC-349	ASTC-349-U	4 1/4	8 1/8	3 1/4	5 15/16	2 11/16	1/2
3 1/2	600-900	556.5-795	ASTC-3411	ASTC-3411-U	4 1/4	8 1/4	3 1/2	5 15/16	2 15/16	1/2
3 1/2	900-1250	715-1113	ASTC-3413	ASTC-3413-U	4 1/4	8 1/16	3 3/4	5 15/16	3 3/16	1/2
3 1/2	1250-1600	1113-1272	ASTC-3415	ASTC-3415-U	4 1/4	9 1/16	4 1/4	6 1/16	3 11/16	5/8
4	350-600	336-477	ASTC-409	ASTC-409-U	4 1/4	8 1/16	3 1/4	6 9/16	2 11/16	1/2
4	600-900	556.5-795	ASTC-4011	ASTC-4011-U	4 1/4	8 1/4	3 1/2	6 9/16	2 15/16	1/2
4	900-1250	715-1113	ASTC-4013	ASTC-4013-U	4 1/4	8 5/8	3 3/4	6 9/16	3 3/16	1/2
4	1250-1600	1113-1272	ASTC-4015	ASTC-4015-U	4 1/4	9 1/16	4 1/4	6 15/16	3 11/16	5/8
4	1500-2000	1272-1590	ASTC-4016	ASTC-4016-U	4 1/4	9 5/16	4 1/2	6 15/16	3 15/16	5/8
1 1/2	1250-1600	1113-1272	ASTC-1415	ASTC-1415-U	3 1/4	8	4 1/4	3 7/16	3 3/8	1/2
1/2	250-350	4/0-336	ASTC-047	ASTC-047-U	2 1/2	5 1/8	3	2 1/16	2 7/16	1/2
1 1/4	900-1250	715-1113	ASTC-1213	ASTC-1213-U	3	7 1/4	3 3/4	3 5/8	3 3/16	1/2

DATE 7-16-57  
 DWN BY WDS CRD BY  
 APPROVED  
 SCALE

ALUMINUM STRAIGHT CONNECTOR  
 TUBE MAIN TO CABLE TAP  
 REDUCER

R/B 110 ANDERSON BRASS WORKS, INC.  
 BIRMINGHAM, ALABAMA  
 CAT. NO. ASTC-(T73) DWG. NO. C-1488  
 SH. #2 OF 3

I.P.S.	CABLE TAP		CATALOG NUMBER		DIMENSIONS IN INCHES					
	M.C.M.	A.C.S.R.	Hex Bolts	U-Bolts	A	B	C	D	E	J
	MIN.-MAX.	MIN.-MAX.								
2	#4-250	#4-4/0	ASTC-206	ASTC-206-U	3 1/2	7	3	4 5/16	2 7/16	1/2
2 1/2	#4-250	#4-4/0	ASTC-246	ASTC-246-U	3 3/4	7 1/4	3	4 3/16	2 7/16	1/2
3	#4-250	#4-4/0	ASTC-306	ASTC-306-U	4	7 1/2	3	5 7/16	2 7/16	1/2
1	900-1250	715-1113	ASTC-1013	ASTC-1013-U	2 3/4	7	3 3/4	3 1/4	3 3/16	1
1	1250-1600	1113-1272	ASTC-1015	ASTC-1015-U	2 3/4	7 1/4	4	3 1/4	3 3/8	1/2
1/2	#4-250	#4-4/0	ASTC-046	ASTC-046-U	2 1/2	5 7/8	3	2 1/16	2 1/16	1/2
4"	900-1250	715-1113	ASTC-4013	ASTC-4013-U	4 1/4	9 1/2	3 3/4	6 7/8	3 3/16	1/2
2	1500-2000	1272-1590	ASTC-2016	ASTC-2016-U	3 1/2	8 1/2	4 1/2	4 5/16	3 7/8	1/2
5"	600-900	556.5-795	ASTC-5011	ASTC-5011-U	5	9 1/8	5	7 5/16	3 1/2	5/8 1/2
1 1/2	1500-2000	1272-1590	ASTC-1416	ASTC-1416-U	3 1/4	7 7/8	4 1/2	3 13/16	3 9/16	1/2
3	1500-2000	1272-1590	ASTC-3016	ASTC-3016-U	4	8 3/4	4 1/2	5 1/16	3 5/8	5/8
2	1250-1600	1113-1272	ASTC-2015	ASTC-2015-U	3 1/2	8	4 1/4	4 5/16	3 3/8	1/2
5	350-500	336-477	ASTC-509	ASTC-509-U	5 1/8	9	5 3/8	7 5/8	2 1/8	1/2
2 1/2	1500-2000	1272-1590	ASTC-2416	ASTC-2416-U	3 3/4	8 1/2	4 1/2	5 3/16	4"	5/8
3/4	900-1250	715-1113	ASTC-0613	ASTC-0613-U	2 1/2	6 3/8	3 3/4	3	3 3/16	1/2
2 1/2	2000-2500	1632-1824	ASTC-2418	ASTC-2418-U	3 3/4	9 1/16	4 3/4	5 3/16	4 1/16	5/8
3 1/2	1500-2000	1272-1590	ASTC-3416	ASTC-3416-U	4 1/4	9 5/16	4 1/2	6 5/16	3 5/16	5/8
2	2000-2500	1632-1824	ASTC-2018	ASTC-2018-U	3 1/2	8 1/2	4 3/4	4 5/16	3 5/8	1/2
1 1/4	1500-2000	1272-1590	ASTC-1216	ASTC-1216-U	3	7 3/4	4 1/2	3 5/8	3 3/8	1/2
2	2500-3000	—	ASTC-3021	ASTC-3021-U	4	9 1/4	5	5 13/16	4 1/2	5/8
3 1/2	#4-250	#4-4/0	ASTC-346	ASTC-346-U	4 1/4	7 3/16	3	5 15/16	2 7/16	1/2
5	1250-1600	1113-1272	ASTC-5015	ASTC-5015-U	5	9 1/8	4 1/4	7 15/16	5 1/16	5/8
5	900-1250	715-1113	ASTC-5013	ASTC-5013-U	5	9 3/8	3 3/4	7 15/16	3 3/16	5/8
3 1/2	2000-2500	1632-1824	ASTC-3418	ASTC-3418-U	4 1/4	9 9/16	4 3/4	6 5/16	4 1/16	5/8
4	4/0-600	4/0-477	ASTCM-409		4 1/4	8 1/16	3 1/4	6 9/16	2 1/8	1/2
3	2000-2500	1632-1824	ASTC-3018	ASTC-3018-U	4	8 7/8	4 3/4	5 3/16	4 1/16	5/8
70MM	900-1250	715-1113	ASTC-70MML3		3 3/4	8 1/16	3 3/4	4 13/16	3 3/16	1/2
70MM	1250-1600	1113-1272	ASTC-70MM15	ASTC-70MM15-U	3 3/4	8 1/16	3 3/4	5 3/16	3 11/16	5/8
50MM	1250-1600	1113-1272	ASTC-50MM15	ASTC-50MM15-U	3 1/2	8	4 1/4	4 5/16	3 3/8	1/2

DATE	10-31-58	DESCRIPTION	ALUMINUM STRAIGHT CONNECTOR TUBE MAIN TO CABLE TAP REDUCER	ANDERSON ELECTRIC CORP. BIRMINGHAM ALABAMA
DWN BY	RPH	CKD BY		
APPROVED				
SCALE	C			